



Today's Corridor Conversation

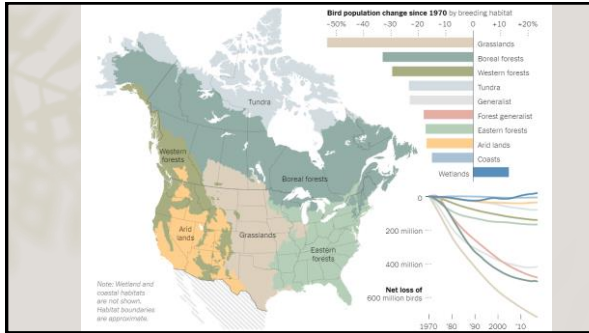
What kind of birds commonly travel through or nest in the MD/DC suburbs?

How and where do they nest?

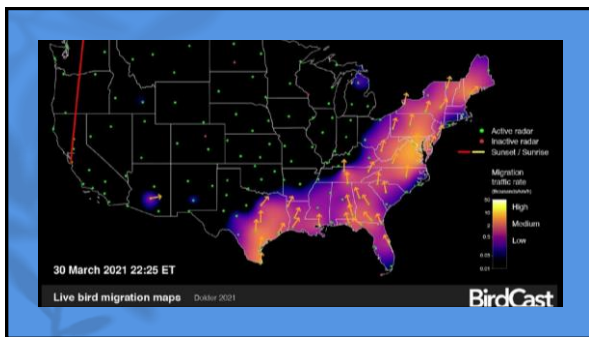
What kind of challenges do they face?

What can we do to increase bird biodiversity in our yardscapes?



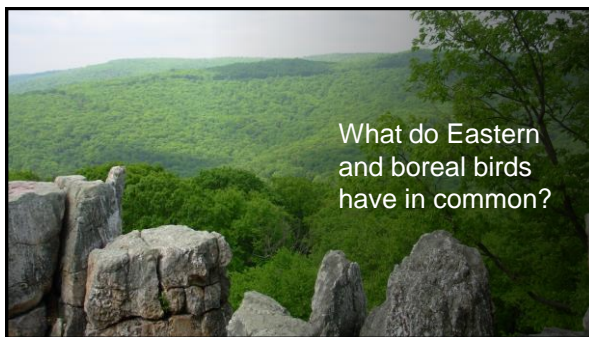






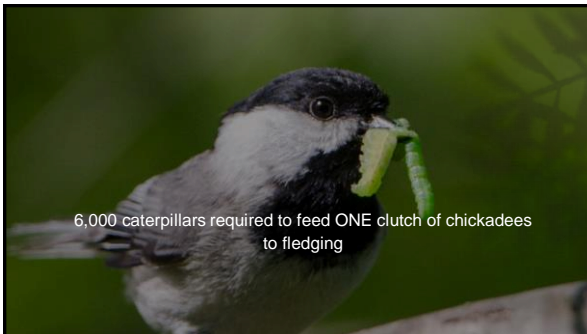






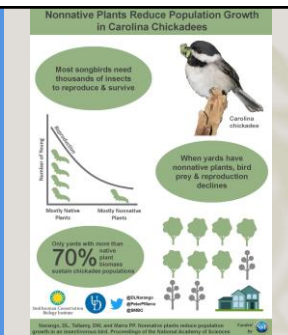
The Great Caterpillar Factory

- Overwhelmingly, moth caterpillars fuel the journey of migrating birds en route to nesting areas in the Northwoods and Canada
- Overwhelmingly, moth caterpillars sustain the nesting and fledging of resident breeding birds in MD
- Overwhelmingly, large canopy trees provide the bulk of moth caterpillars in MD



If you want to feed the birds ...
You have to first feed the bugs

The most productive caterpillar factories are native trees and shrubs

[illegible]

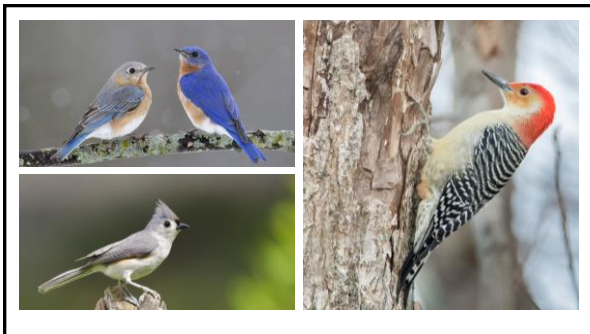
Biggest threat to the factory:

[illegible]

Second Biggest Threat:

[illegible]













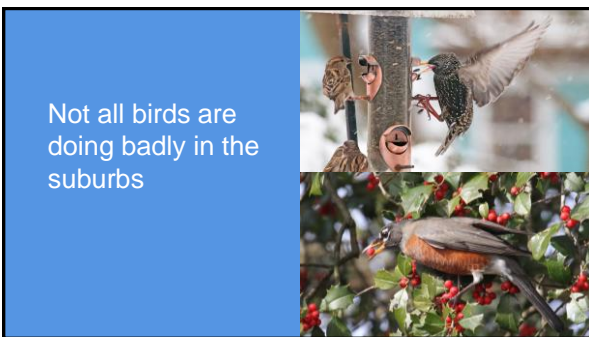










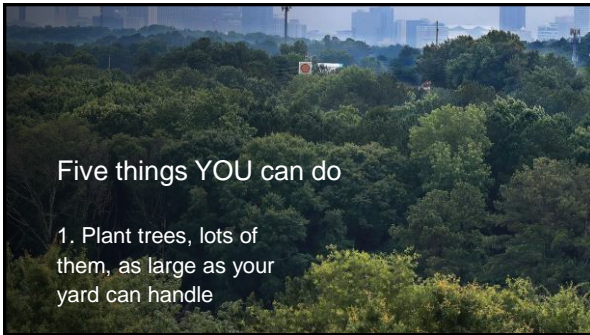


Altered landscapes provide new resources



Five things YOU can do

1. Plant trees, lots of them, as large as your yard can handle



Your mix of trees and shrubs

- One or two from column A (large canopy trees)
- Two or three from column B (understory trees)
- Five or more shrubs from Column C (various sizes)



Column A -- Canopy
Tulip Tree ... Oak ... Beech



Additional Benefits



Column B – Understory
Redbud ... Deciduous Holly ...
Shadbush



Column C – Shrub Layer
Native Azalea ... Elderberry ... Spicebush



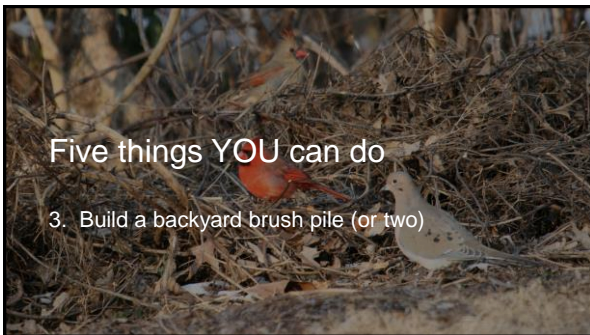
Five things YOU can do

2. Layer your yard with shrubs and mixed plants, not lawn



Five things YOU can do

3. Build a backyard brush pile (or two)



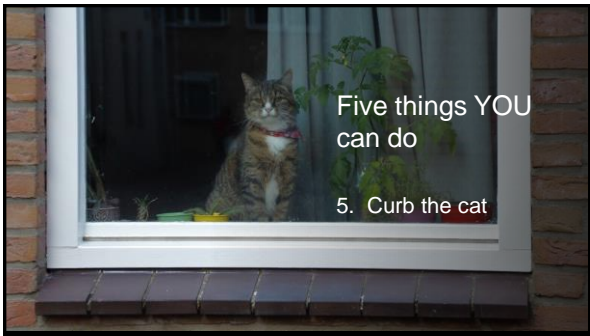
Five things YOU can do

4. Add a water source



Five things YOU can do

5. Curb the cat



Think about our
"Green Infrastructure
Plan" -- Put the
caterpillar factories
back to work!

